

Mine City Handbook 2018: Digest version
Issuer: Mine City, Yamaguchi Prefecture

with MINE

Enriching dreams,
together.





VR 360°
Read QR code

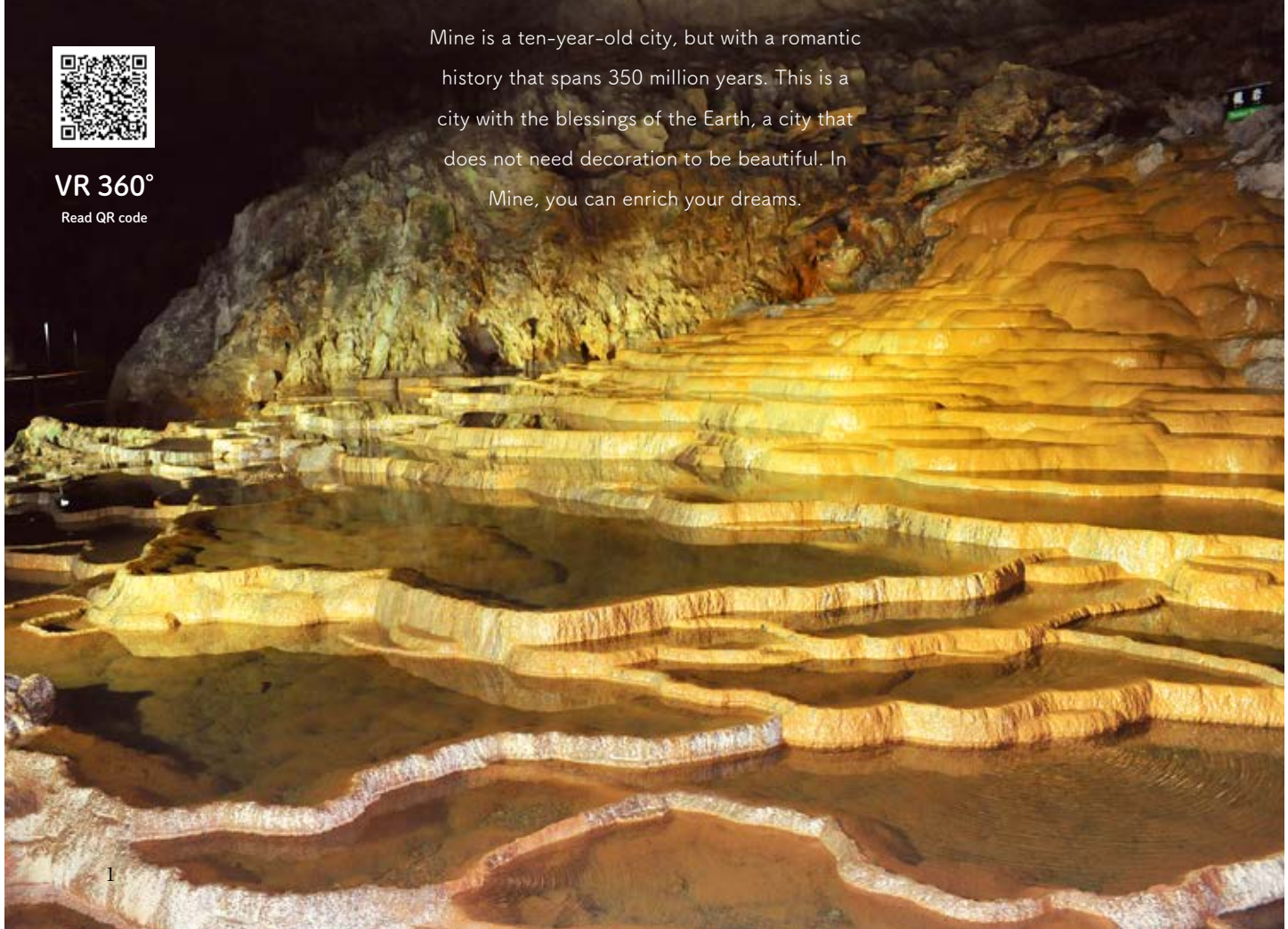


Enriching dreams, together.



VR 360°
Read QR code

Mine is a ten-year-old city, but with a romantic history that spans 350 million years. This is a city with the blessings of the Earth, a city that does not need decoration to be beautiful. In Mine, you can enrich your dreams.



The White, Black, and Red that Form Mine City.

White--- Lying in the deep blue ocean in the past, the Akiyoshidai tableland area was a bed for coral reefs. This turned into limestone over 350 million years, which formed a majestic karst plateau.

Black--- High-quality anthracite coal was created from ancient forests about 200 million years ago. Omine coalfield has supported Japanese industry as one of the

largest coal producers.

Red--- Naganobori Copper Mine is a good locality of "red copper": copper of high quality formed by intrusion of magma into limestone about 100 million years ago.

Mine City, with its long and dynamic background, is symbolized by the colors of the white, black and red which have historically fostered the area.



CONTENTS



The designated Special Natural Monuments of Akiyoshido Cave, Kagekiyodo Cave, and Taishodo Cave give us an opportunity to enjoy the beauty of nature in various ways. The Akiyoshidai tableland holds the Japan largest mountain-burning event every February, when you can see a fire spreading swiftly over the 1,138-hectare grassland. Cycling and trail-running are also among the popular outdoor activities in the area. Don't miss visiting the mysterious cobalt blue spring-fed Beppu-Bentenike Pond.

The magnificent natural beauty of the Akiyoshidai tableland enables us to enrich our hopes and dreams for the future.



A City of Harmony: Nature, History and Unity

Mine City was designated by Japanese Geoparks in 2015, where you can physically feel a variety of benefits brought by the activities of the earth in the karst plateau: in the coal produced by the Omine Coalfield, and in the copper produced by the Naganobori Copper Mine among others. Mine

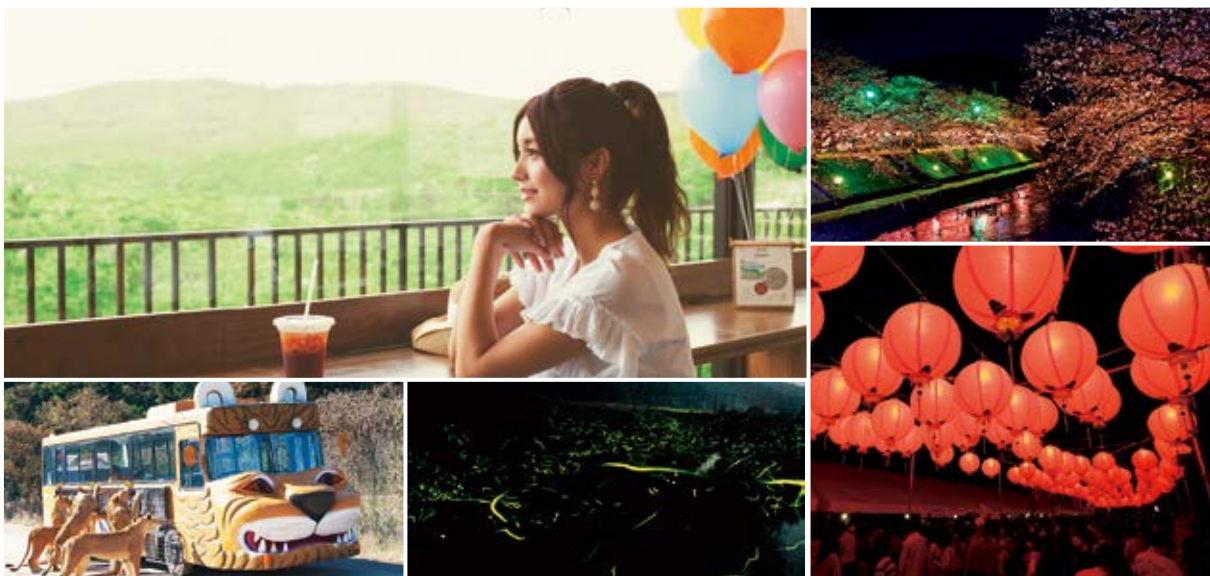
City is also rich in cultural and historic assets including the Headquarters of the Oda-Edo battles, recognized as the birthplace of the Meiji Restoration. Here you can feel the long, storied history of the area. In addition to this, there are a variety of traditional seasonal festivals and events.





Experience the heart of Japan as you walk the nostalgic Japanese landscapes that change with the season.

CONTENTS



Karstar, is a hub facility for the Geopark that includes a visitor's center and café. It is perfect as a stop-off point for hikers and cyclists. Every April, Mine Sakura Park holds the Mine Sakura Festival: a fantastic sight which features rows of cherry trees lit up by lanterns. In addition, be sure to visit the closely-observable wild animals of Akiyoshidai Safari Land, the dance of fireflies in Yashiro district in Shuho town, and the exotic Mine Lantern Night Festival.



City Development Plan

Visions for the Future

A township in harmony with nature,
whose people lead full, peaceful lives.

~City development that nurtures dreams and embraces ancient, storied past.~

Mine City continues to make the utmost policy efforts for the safety and security of the citizens. It ensures the enhancement of the medical services, welfare for senior citizens and citizens with special needs, and the child-rearing environment. It also promotes tourism exchange, hospitality-centered city development, the creation of diverse industries, the expansion of

employment, the attraction of enterprises, the improvement of educational environment, the inheritance of local history and culture, and human resource development for supporting local activities. Based on the PDCA cycle, we are trying to maintain a healthy fiscal administration by improving operations and the promotion of joint initiatives between public and private sectors.



Priority Projects

Three Projects to Carry Our Dreams

City development is being performed via a variety of policies and measures such as (but not limited to) international exchanges, a focus on interindustry agricultural revitalization and Geopark activities.

Mine City is proactively working on developing a city where people want to move and live by promoting the following three projects:

- 1) International Exchange Promotion Project: proactively sending information to the world and inviting inbound tourists through exchange activities.
- 2) Interindustry Agricultural Revitalization Project: using the production, processing, and distributing industries to provide

stability to agriculture, and to create and expand employment opportunities for people engaged in agricultural production.

- 3) Geopark Activity Promotion Project: broadening tourism exchange and the economy of the city by promoting efforts and dispatching information to enhance the appeal of local areas, as well as utilizing manga and animation to support public relations campaigns for the promotion of settlement initiatives.

Map of Mine City

(Area: 472.64km²)



Access

▼ Chugoku Expressway

- From Mine Interchange 7 min. by car
- From Mine-nishi Interchange 20 min. by car

▼ Air

- From Yamaguchi Ube Airport 50 min. by car

▼ Train

- From Mine Station, JR Mine Line 4 min. by foot
- From Shin-Yamaguchi Station, Sanyo Shinkansen 40 min. by car
- From Asa Station, Sanyo Shinkansen 20 min. by car



City Tree: Evergreen Oak

The evergreen oak is a tall tree, belonging to the Fagaceae family of plants, and grows wild citywide.

Having long been used as hedges, farming utensils and building materials, it is familiar to the citizens.



City Flower: Japanese Cherry

A deciduous tree of varying height belonging to the Rosaceae family of plants, it is well-known as the representative flower of Japan. Viewing cherry blossom trees can be enjoyed citywide; in particular, the row of cherry trees along the Asagawa river is one of the most popular sites appreciated by the citizens.



City Seal

The seal portrays the majestic karst tableland in the motif of the letter M, along with sylvan and fecund land, and the peaceful and vibrant city. The bright, breezy white background represents interaction and harmony, while the green represents development, harmony and well-being.



COOL MINE CITY



Mine City Official Website

The official website providing various general information about Mine City



LIFE OF MINE: Yamaguchi-ken, Mine-shi @minecity0837

Official Facebook of Mine City, providing information about events held in the city



MINECITY_official

The Mine City Instagram, providing beautiful scenery, local products and other information about the city



Mine City Tourist Association Official Website

Official website providing tourist and sporting information in the city



Mine City Settlement Promotional Movie: *A Sketch of Daily Life in Mine City*

Animation for promoting settlement in Mine City

Issue date: March, 2018

Some photos and videos in the hand book are taken with special permission from the concerned authorities.